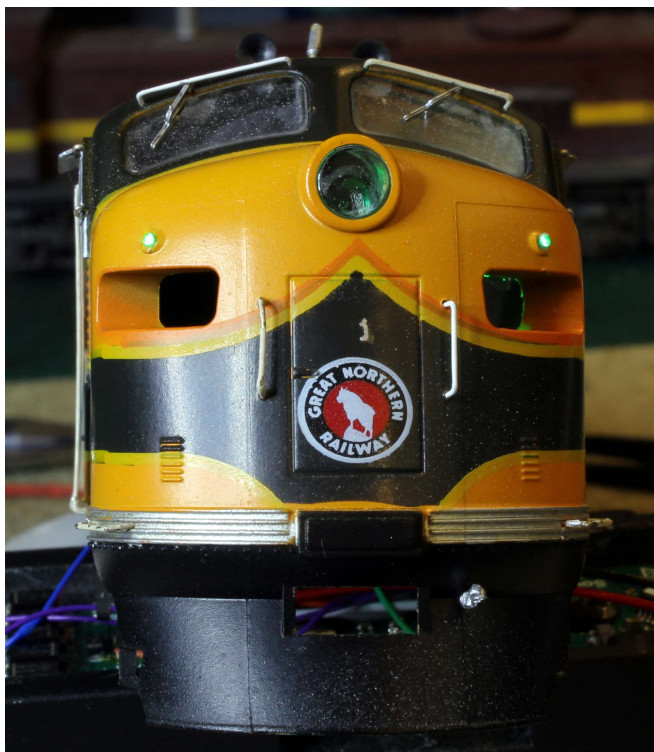


# Class Lights on a Kato F3

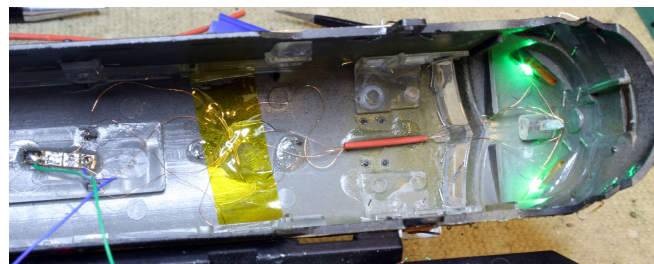


This is a Kato F3 but from memory it is very similar to the Stewart F3. The class lights above are SMD LEDs size 603. The lenses are 1mm Fibre Optic The outer part has had a soldering iron near it to “bell” the lens BEFORE inserting into the 1mm hole. A drop of ACC is applied at the back of the lens. When the glue has set the fibre is cut flush with the inside of the shell.

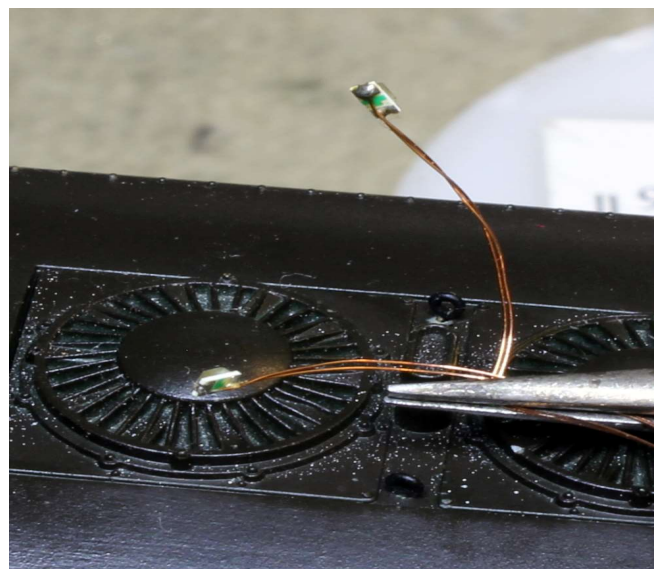


The LEDs are glued to the body to line up with the fibre – again using ACC. The LEDs had the wires soldered on before I got them – the wires are run past the Headlight lens and then down to the heatshrink glued to the roof. This keeps the wires away from the gear tower. The LEDs will be

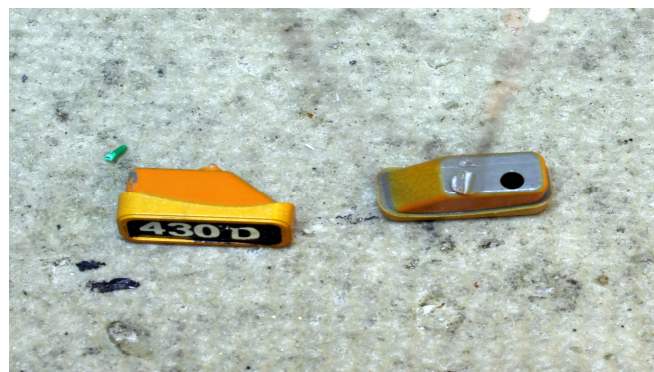
covered later so that there will be now light inside the shell.



A piece of tape holds the excess wire up out of the way. The wires are soldered to a short piece of PCB Tie glued to the roof. This also has the 3K3 resistor mounted with the LEDs in series. The blue wire goes to the +ve pad on the Tsunami and the and the green goes to an available Fx output. The decoder in this loco is a TSUNAMI 1.



Here are the two Green LEDs before mounting.



These are the number boards – the LEDs go into the hole on the back and when mounted they are wired the same as the Class lights but wired to a different Function Output.

**Gerry Hopkins MMR**